

AVAILABLE LAND LUZERNE COUNTY, PENNSYLVANIA

REDUCED SALE PRICE: \$120,000



N. CHURCH STREET, HAZLE TOWNSHIP, PA 18202

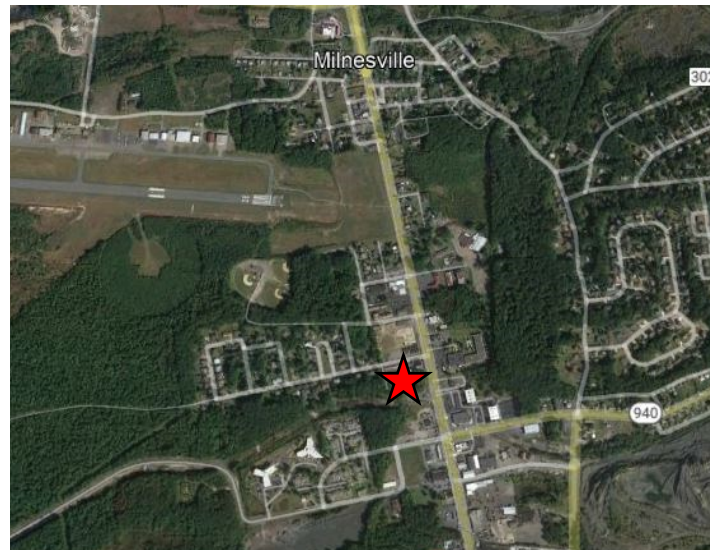
3.74+/- acres of commercial land located along SR 309 with approximately 192 ft. of frontage. Property is zoned B-2 (general commercial).

PROPERTY DETAILS:

- 3.74+/- Acres
- PIN: S8S8004005-26
- 192 ft. of Frontage
- Zoned B-2 (General Commercial)
- 2025 Taxes - \$7,608.00
- AADT: 21,001 on SR 309 (PennDOT Tire 2021)

LATITUDE: 40.981321

LONGITUDE: -75.980825



2024 DEMOGRAPHICS

	1 MILE	3 MILES	5 MILES
POPULATION	6,246	45,581	60,546
HOUSEHOLDS	2,444	17,009	23,361
MEDIAN HH INCOME	\$48,165	\$48,791	\$54,527

Source: Esri

For Information Contact:

Al Guari, Vice President - Brokerage

aguari@mericle.com

Office: 570.823.1100 * Cell: 570.499.2889

Information shown is purported to be from reliable sources. No representation is made to the accuracy thereof, and is submitted subject to errors, omissions, prior sale/lease, withdrawal notice, or other conditions.

570.823.1100
mericle.com



East Mountain Corporate Center
100 Baltimore Drive
Wilkes-Barre, PA 18702

Developing Northeastern Pennsylvania's I-81 Corridor Since 1985

