

REDUCED SALE PRICE: \$120,000



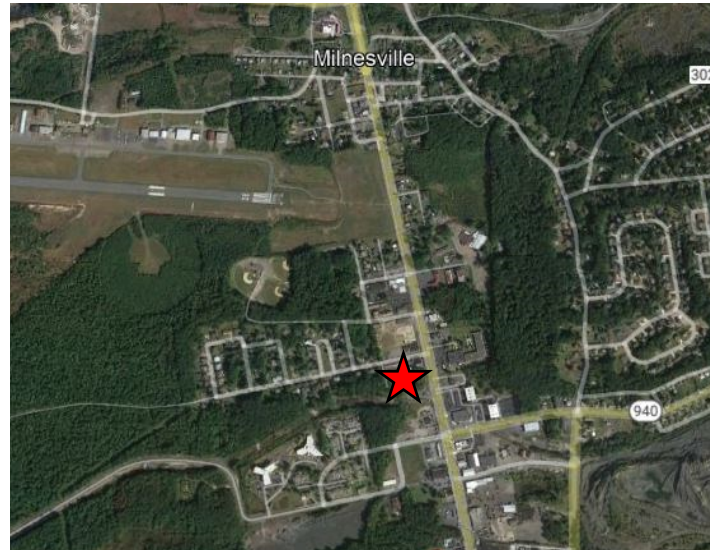
N. CHURCH STREET, HAZLE TOWNSHIP, PA 18202

3.74+/- acres of commercial land located along SR 309 with approximately 288 ft. of frontage. Property is zoned B-2 (general commercial).

PROPERTY DETAILS:

- 3.74+/- Acres
- PIN: S8S8004005-26
- 288 ft. of Frontage
- Zoned B-2 (General Commercial)
- 2023 Taxes - \$7,166.00
- AADT: 22,756 on SR 309 (PennDOT Tire 070920)

LATITUDE: 40.981321 LONGITUDE: -75.980825



2022 DEMOGRAPHICS

	1 MILE	3 MILES	5 MILES
POPULATION	6,321	44,693	59,631
HOUSEHOLDS	2,462	16,654	22,977
MEDIAN HH INCOME	\$47,441	\$47,353	\$52,165

Source: Esri

For Information Contact:

Al Guari, Vice President - Brokerage

aguari@mericle.com

Office: 570.823.1100 * Cell: 570.499.2889

Information shown is purported to be from reliable sources. No representation is made to the accuracy thereof, and is submitted subject to errors, omissions, prior sale/lease, withdrawal notice, or other conditions.