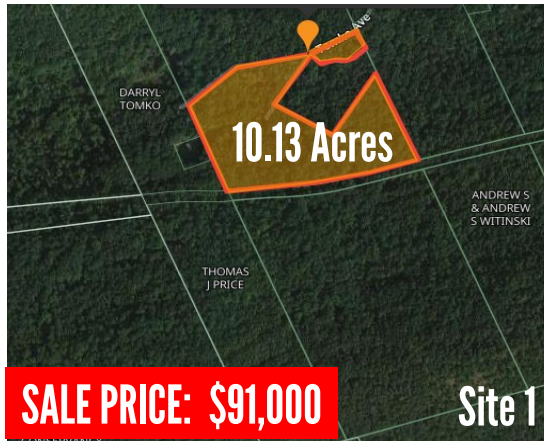


# AVAILABLE LAND

## TOMKO AVENUE, HANOVER TOWNSHIP LUZERNE COUNTY, PA 18706



LATITUDE: 41.174346

LONGITUDE: -75.971384

### PROPERTY DETAILS:

Undeveloped acreage for sale with varying topography and a small stream. Proposed subdivision for two separate parcels: Site 1 consisting of 10.13 Acres and Site 2 consisting of 34.03 Acres. This land is ideal for a private woodland recreation area. **FINANCING AVAILABLE TO QUALIFIED BUYERS WITH 10% DOWN!**

- PIN: p/o K800A019-25
- 44.16+/- Acres
- Zoned C-OP (Conservation/Open Space)
- 2025 Taxes - \$1,492 \*(Separate parcel taxes TBD upon subdivision)

### For Information Contact:

**Al Guari, Vice President-Brokerage**

aguari@mericle.com

Office: 570.823.1100 \* Cell: 570.499.2889

Information shown is purported to be from reliable sources. No representation is made to the accuracy thereof, and is submitted subject to errors, omissions, prior sale/lease, withdrawal notice, or other conditions.

570.823.1100  
mericle.com



East Mountain Corporate Center  
100 Baltimore Drive  
Wilkes-Barre, PA 18702

*Developing Northeastern Pennsylvania's I-81 Corridor Since 1985*

