

LEASE PRICE: \$14.50/SF



2021 DEMOGRAPHICS

	1 MILE	3 MILES	5 MILES
POPULATION	16,523	82,148	128,662
HOUSEHOLDS	7,518	35,324	55,625
MEDIAN HH INCOME	\$52,238	\$45,562	\$48,570

Source: Esri

630 WYOMING AVENUE, KINGSTON, PA 18704

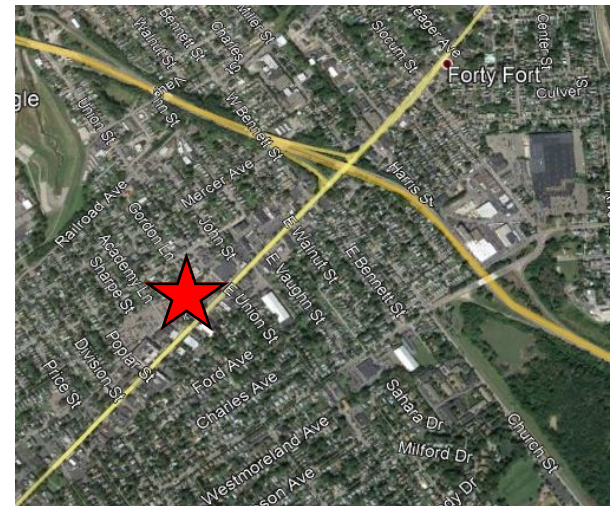
LATITUDE: 41.271070

LONGITUDE: -75.887390

Two Spaces to become available mid-August, 2021 featuring NEW flooring, ceilings, HVAC units and electrical panels. Building presently undergoing renovations. Unit 1 is a 1,100 SF end cap and Unit 2 is a 1,200 SF. We are accepting new tenant leasing opportunities immediately for Landlord review! This 3-unit small neighborhood center is anchored by a convenient mart and is located on the corner of Wyoming Ave (Rt 11) and W. Dorrance Street at a traffic signaled intersection. The property has great visibility with off-street parking, a pylon sign and canopy signage. Street parking is available as well. To name a few suitable businesses for this location: retail stores, beauty/barber shops, café/restaurant, professional services.

PROPERTY DETAILS:

- 4,535 SF+/- 3-Unit Building
- 0.259+/- Acres
- PIN: G9SE2019018-34
- Public Utilities
- 10 ft. Ceiling Heights
- Insulated
- Vinyl Floor Covering
- Masonry/Wood Exterior
- Rubber and Shingle Roof
- Gas Forced Hot Air Hear
- Central A/C
- 200 amp Single Phase Electric
- 10 Parking Spaces
- Zoned C-2 (Community Business)
- Pylon Signage at Street
- AADT of 21,064 Vehicles Rt 11 (PennDOT 2018)



For Information Contact:

Julia D. Namutka, Sales Associate

jnamutka@mericle.com

Office: 570.823.1100

* Cell: 570.881.9512

Information shown is purported to be from reliable sources. No representation is made to the accuracy thereof, and is submitted subject to errors, omissions, prior sale/lease, withdrawal notice, or other conditions.

570.823.1100
mericle.com



East Mountain Corporate Center
100 Baltimore Drive
Wilkes-Barre, PA 18702

Developing Northeastern Pennsylvania's I-81 Corridor Since 1985

