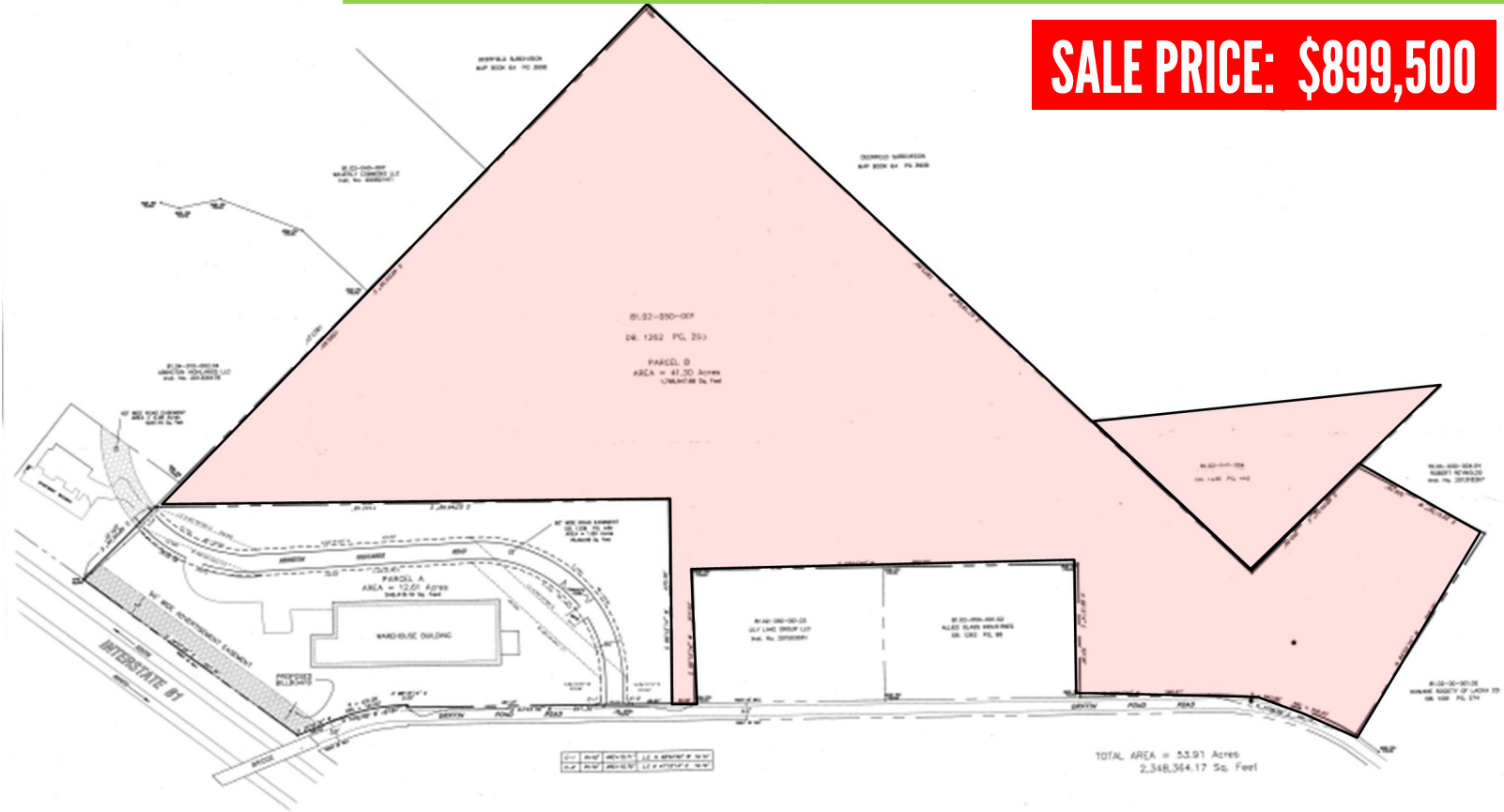


AVAILABLE LAND LACKAWANNA COUNTY, PA

SALE PRICE: \$899,500



ADJACENT 925 GRIFFIN POND RD, S. ABINGTON TWP., PA 18411

Proposed subdivision of 45+/- acres zoned M-1 (Manufacturing) adjacent to a 65,750 SF industrial building.

PROPERTY DETAILS:

- 45+/- Acres
- PINs: p/o 08102050001; 0810204000401
- 677.93 ft. of Frontage
- Zoned M-1 (Manufacturing)
- 2020 Taxes - \$ TBD upon subdivision

For Information Contact:

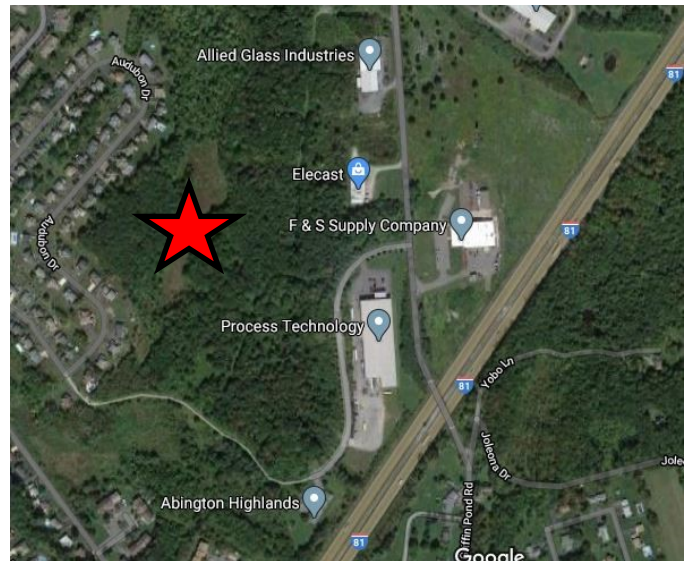
Al Guari, Vice President-Brokerage

aguari@mericle.com

Office: 570.823.1100 * Cell: 570.499.2889

LATITUDE: 41.523910

LONGITUDE: -75.663095



Information shown is purported to be from reliable sources. No representation is made to the accuracy thereof, and is submitted subject to errors, omissions, prior sale/lease, withdrawal notice, or other conditions.

570.823.1100
mericle.com



East Mountain Corporate Center
100 Baltimore Drive
Wilkes-Barre, PA 18702

Developing Northeastern Pennsylvania's I-81 Corridor Since 1985

TCN
WORLDWIDE
REAL ESTATE SERVICES