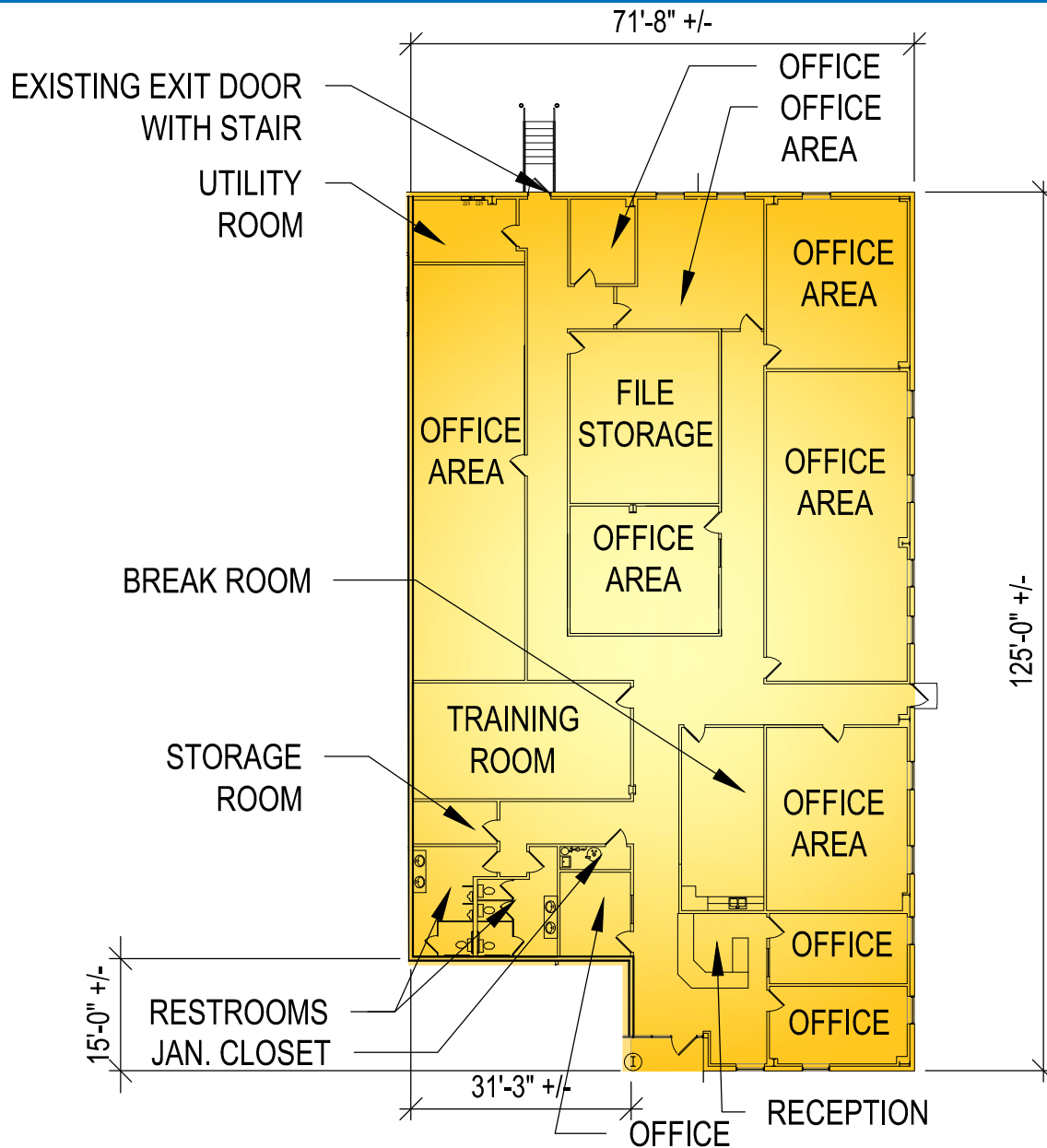


EXISTING FLOOR PLAN

AVAILABLE 8,480 S.F. FACILITY
WITHIN AN EXISTING 40,000 S.F.
MULTI-TENANT BUILDING

PARCEL 10E
225 STEWART ROAD
HANOVER INDUSTRIAL ESTATES
HANOVER TOWNSHIP
WILKES-BARRE, PA 18706



These plans have been prepared solely for marketing purposes for the exclusive use of
- Mericle Commercial Real Estate Services

F:\JOB\2640\MDC\DWG-SPEC\MKG-225 STEWART ROAD 022217.dwg CK

570.823.1100
mericle.com



East Mountain Corporate Center
100 Baltimore Drive
Wilkes-Barre, PA 18702

Developing Northeastern Pennsylvania's I-81 Corridor Since 1985