

**REDUCED SALE PRICE: \$799,000**



## 2018 DEMOGRAPHICS

	1 MILE	3 MILES	5 MILES
POPULATION	763	6,718	16,751
HOUSEHOLDS	255	2,439	6,048
MEDIAN HH INCOME	\$71,527	\$64,885	\$63,511

Source: Esri

## 131 SCENIC ROAD, KRESGEVILLE, PA 18333

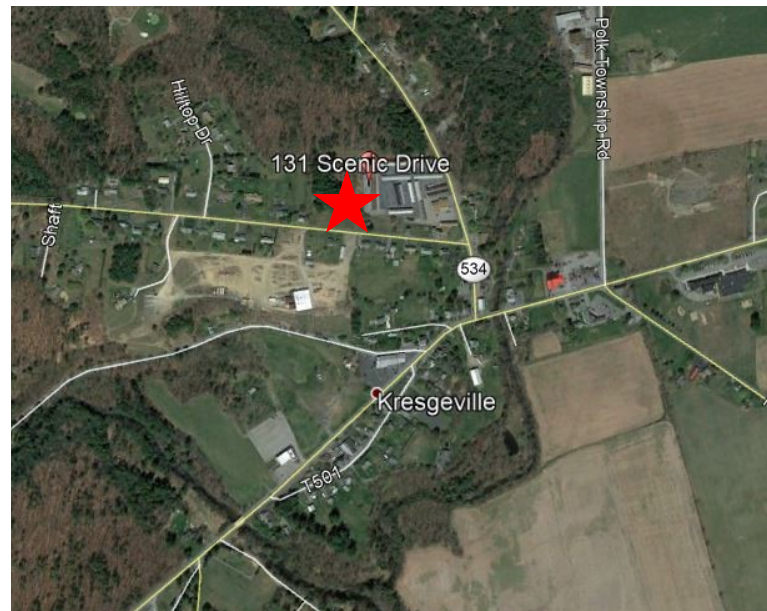
16+/- acre site with 17 structures. This former building materials/lumber supply yard sits on two tax parcels. The site consists of 15.693 acres in one and .31 acres on the corner of Beltsville Road and Scenic Drive. Excellent reuse for marketplace user, distributor or other retailer. Zoned R-3. Variance required for change of use.

Latitude: 40.903134

Longitude: -75.497961

## PROPERTY DETAILS:

- Over 73,000 SF of Covered or Enclosed Structures
- 16+/- Acres in Total
- PIN's: 13622701264008 & 13672701168406
- Zoned R-3
- 2018 Taxes - \$11,390.28



## For Information Contact:

**Al Guari, Vice President - Brokerage**

aguari@mericle.com

Cell: 570.499.2889 \* Fax: 570.704.0606